

A welder wearing a hard hat and protective gear is working on a large, circular metal structure in a factory. The structure is composed of many vertical metal bars and a thick outer ring. The welder is positioned at the top of the structure, and a bright light from the welding process is visible. The background is dark, suggesting an industrial setting.

*Fabricating Your
Future For Over
100 Years*

KANAWHA

MANUFACTURING COMPANY

Charleston, West Virginia



M.T. Davis
Founder



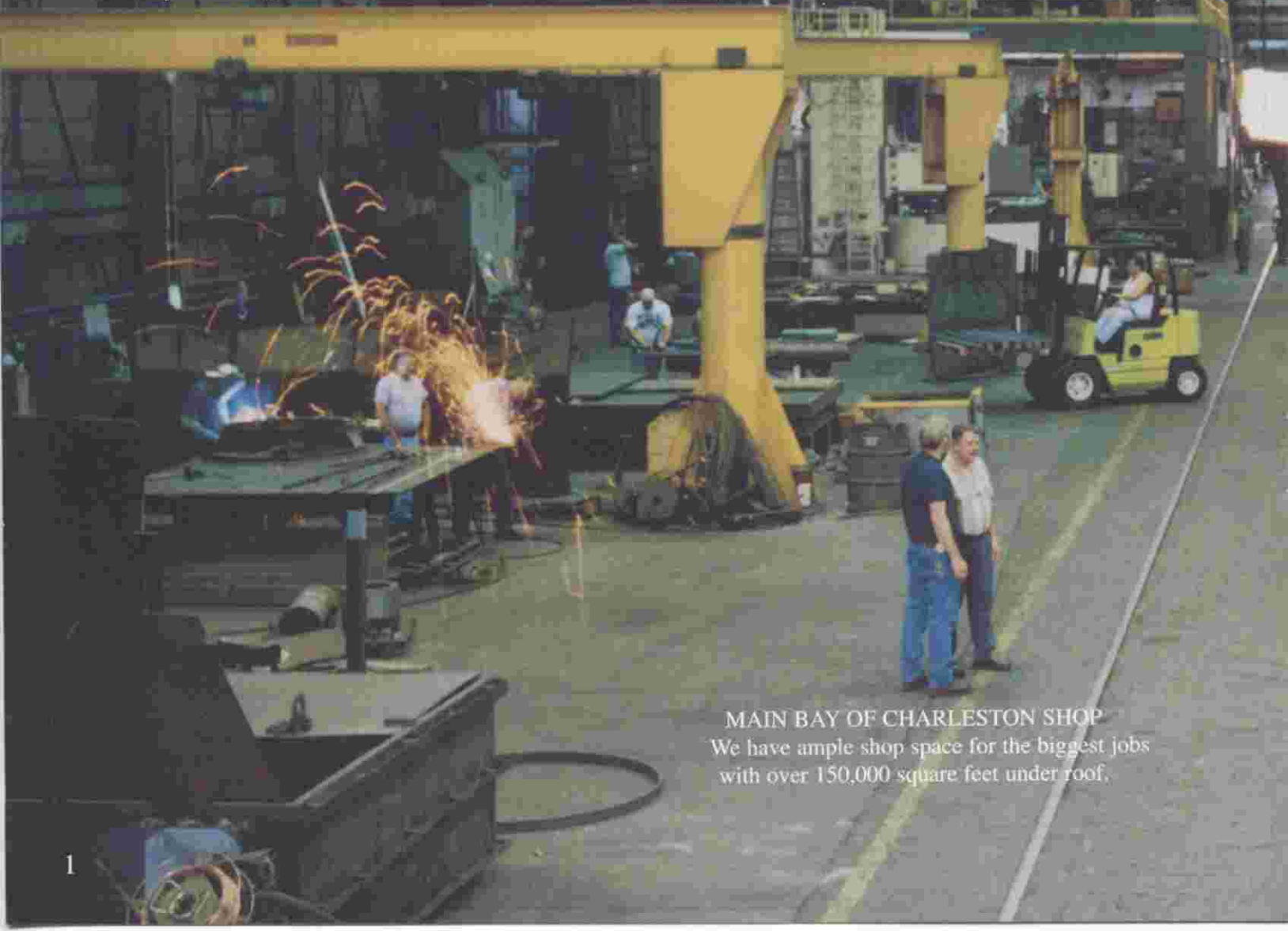
Wm. Brewster Davis, PE
President



William H. Lively, Jr.
Vice President

Kanawha Manufacturing did not become a full service, turnkey fabrication and machine shop overnight. Founded in 1902, our company's steady and sustained growth can only be attributed to one thing: continually meeting our customer's needs with quality

fabrication and machining. This customer loyalty, in good economic times and bad, has allowed us to excel in all areas of service. Complete engineering and field service complement both of our shops.



MAIN BAY OF CHARLESTON SHOP
We have ample shop space for the biggest jobs with over 150,000 square feet under roof.



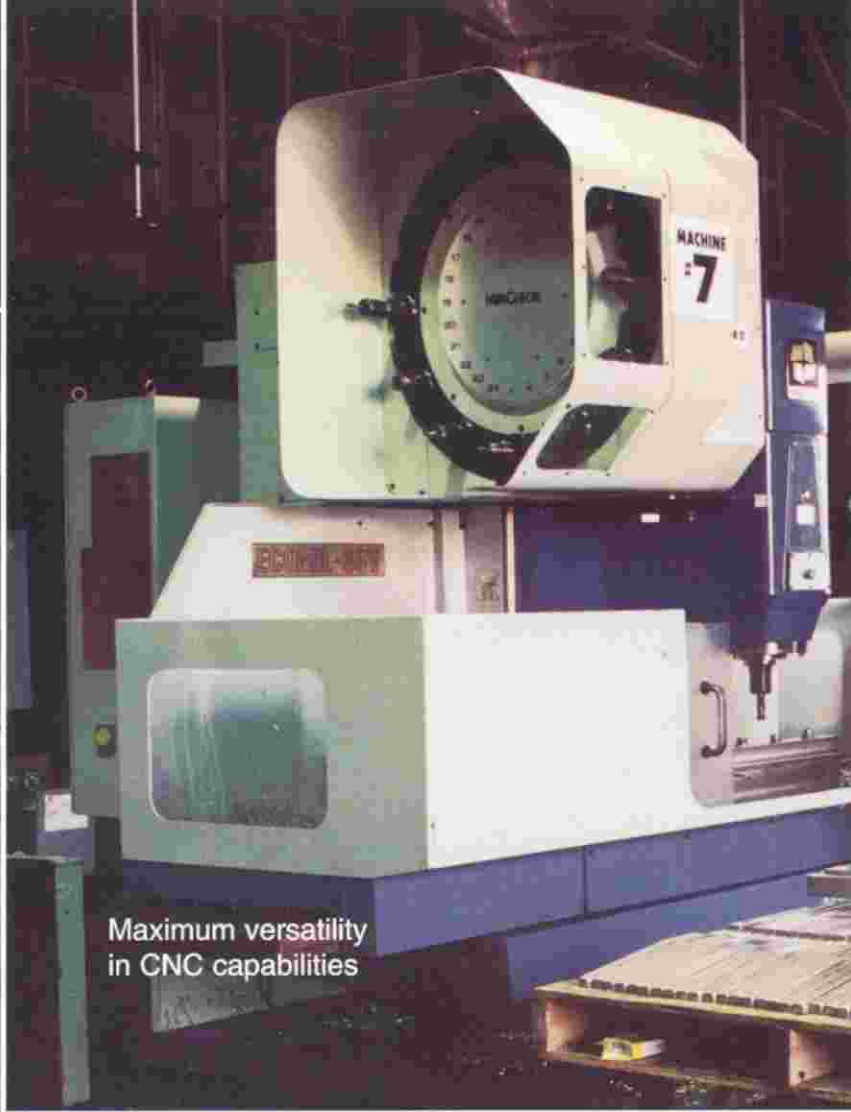
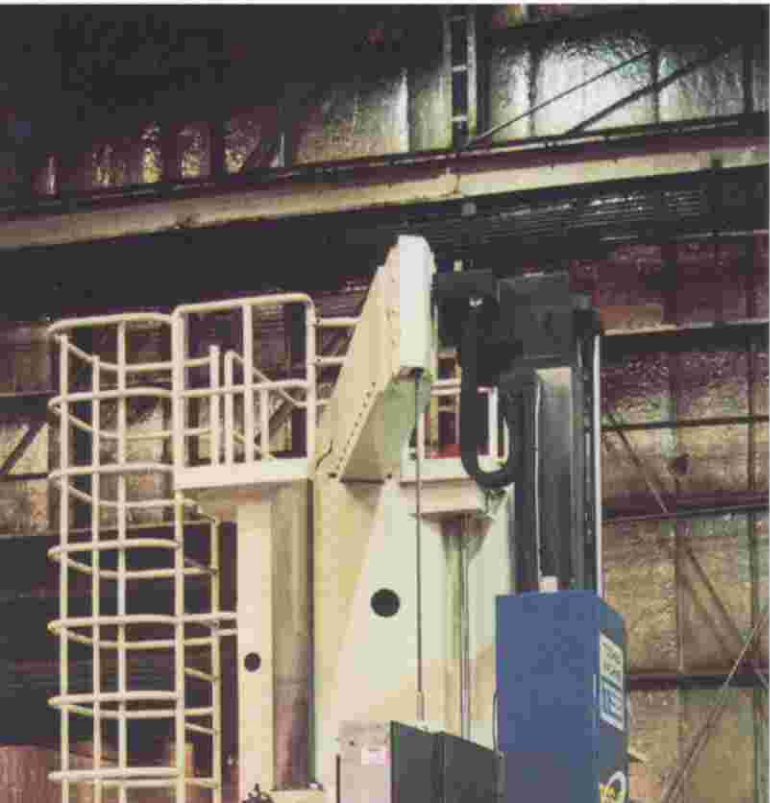
Daily Production Meeting

Our primary customer was the coal industry until the late 50's. We then began to offer our services to all industries demanding quality work, delivered on time and at a competitive price. Our valued service has allowed us to partner with

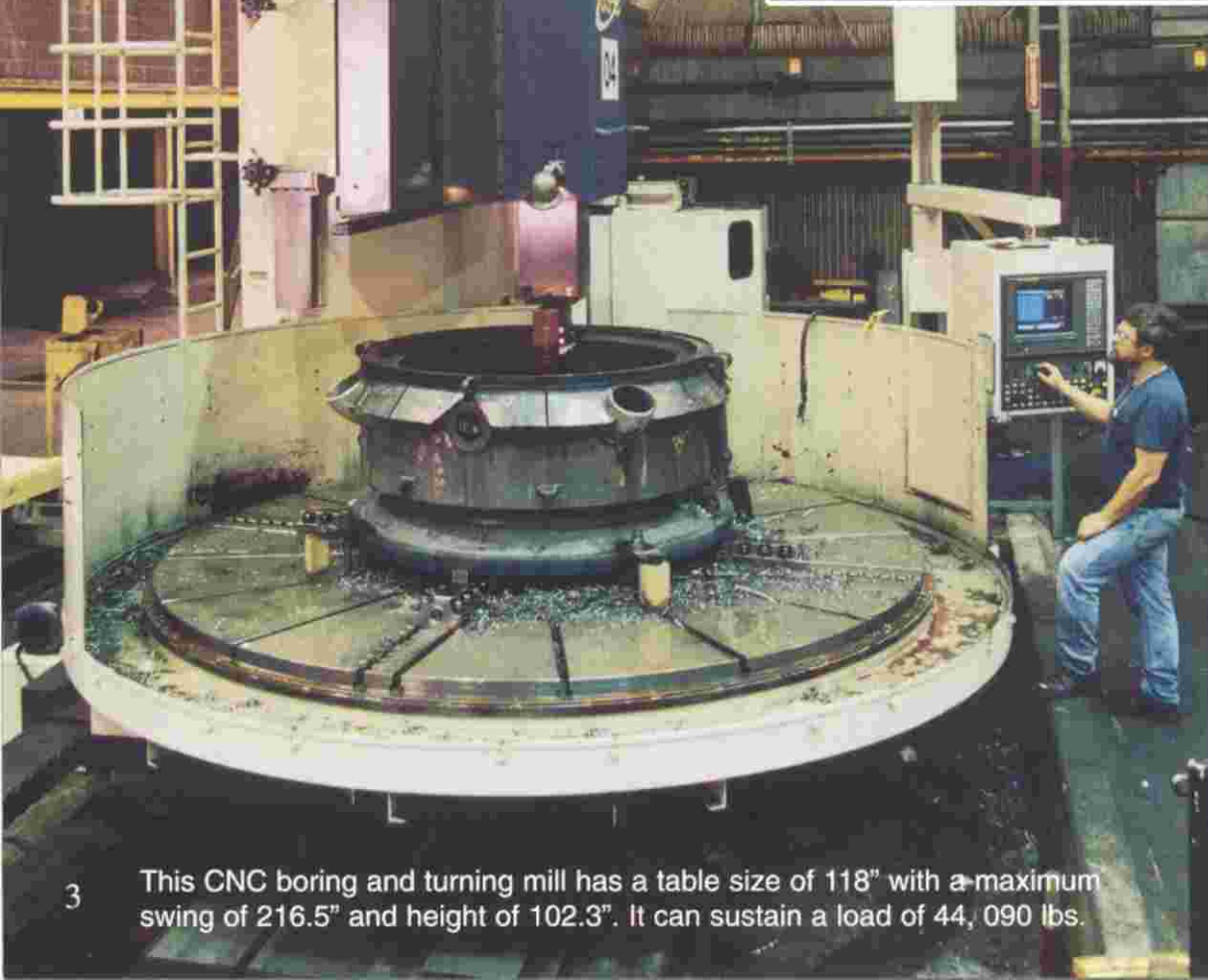
hundreds of customers, large and small, in fabricating their future. Now in our second century, we have positioned ourselves as a premier, full service facility ready to meet your needs.



CNC MAKES THE DIFFERENCE ...

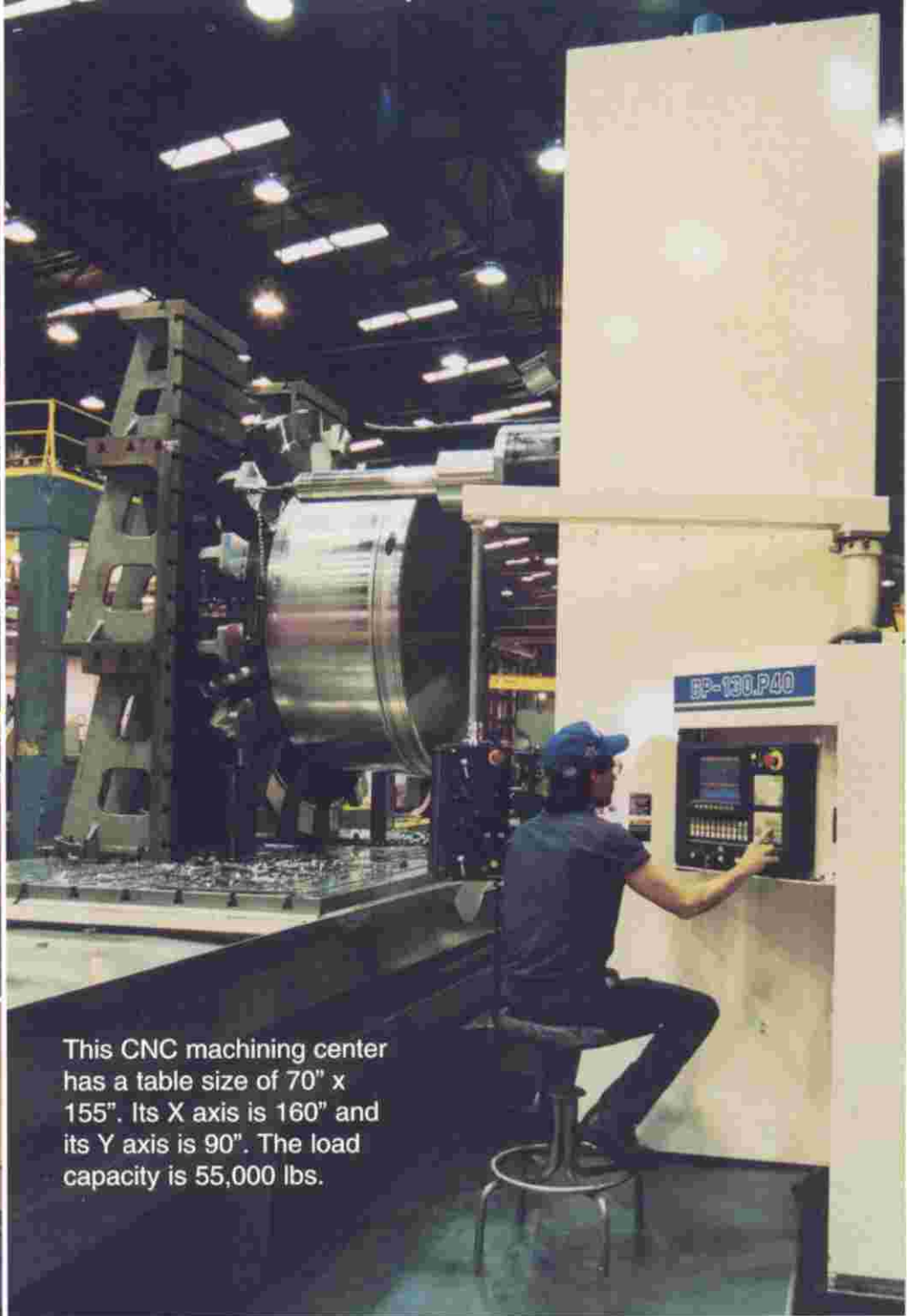


Maximum versatility
in CNC capabilities



3

This CNC boring and turning mill has a table size of 118" with a maximum swing of 216.5" and height of 102.3". It can sustain a load of 44,090 lbs.



This CNC machining center has a table size of 70" x 155". Its X axis is 160" and its Y axis is 90". The load capacity is 55,000 lbs.

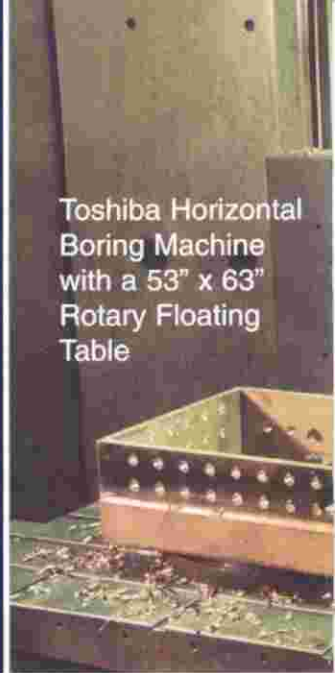
A FULL SERVICE MACHINE SHOP

Versatility is the key word explaining our machine shop, serving a broad spectrum of applications. The many varied pieces of modern equipment allow us support of horizontal and vertical work of all shapes and sizes. CNC, NC and conventional equipment complement our fabrication capabilities, allowing our customer the comfort of turnkey service. This practically eliminates the uncertainties involved in sub-contracting. We control the flow of work to these machines to meet the needs you, our customer, require.

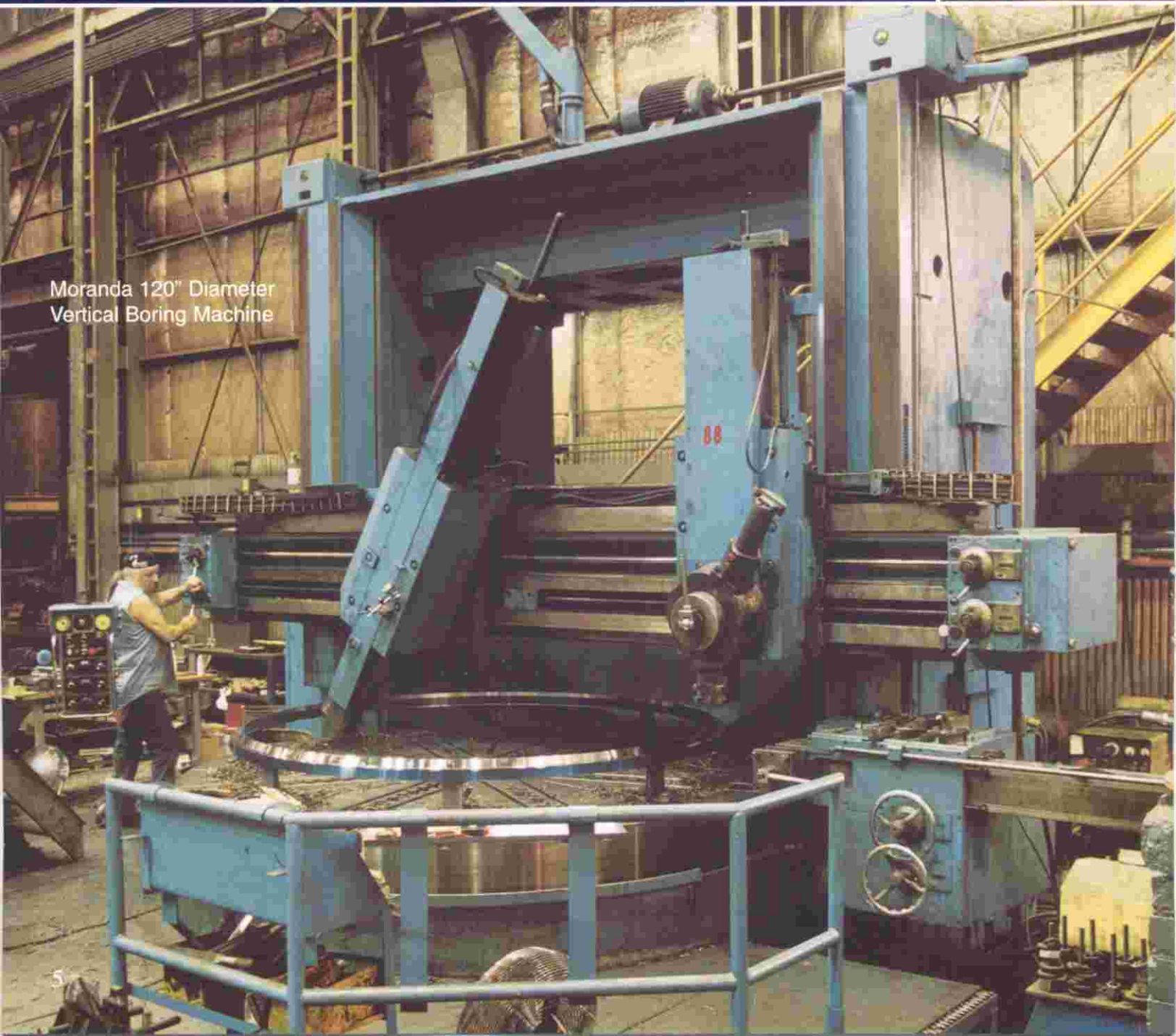
TRADITIONAL MACHINING

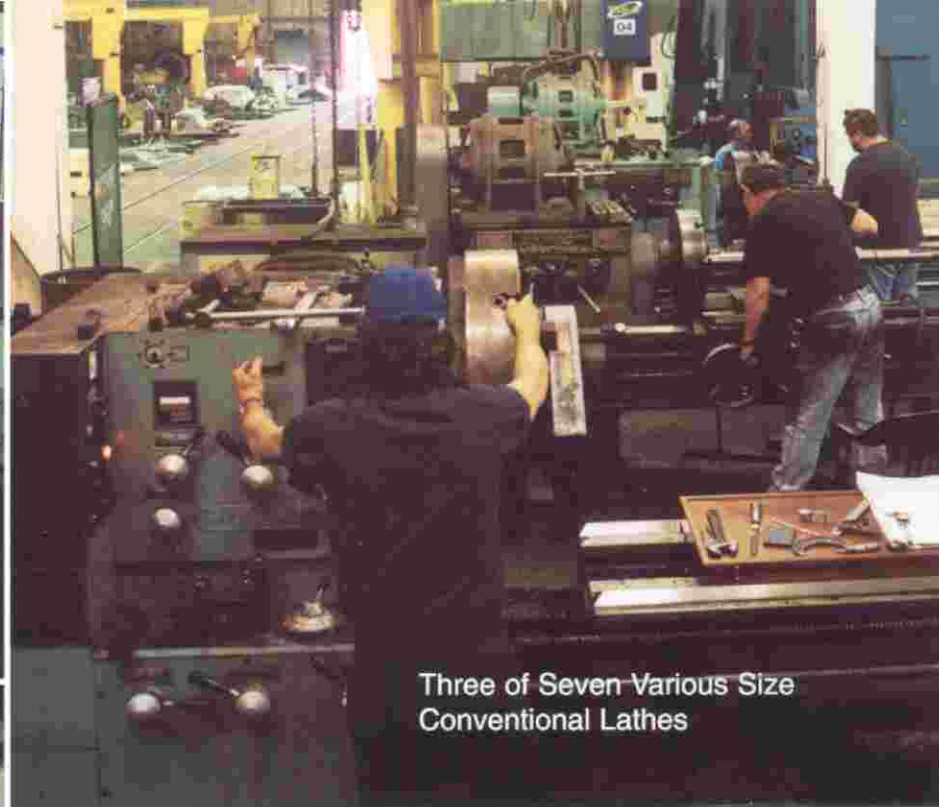
Complementing our large CNC capabilities is a complete machine shop with a vast array of equipment. The majority of the one-of-a-kind or limited quantity jobs are usually more cost effective when run on the older conventional machines. Here we can offer the just-right-size machine for each job, guaranteeing you the lowest possible equipment cost. Seldom do we have to sub-contract work for not having a large enough machine.

Toshiba Horizontal Boring Machine with a 53" x 63" Rotary Floating Table



Moranda 120" Diameter Vertical Boring Machine

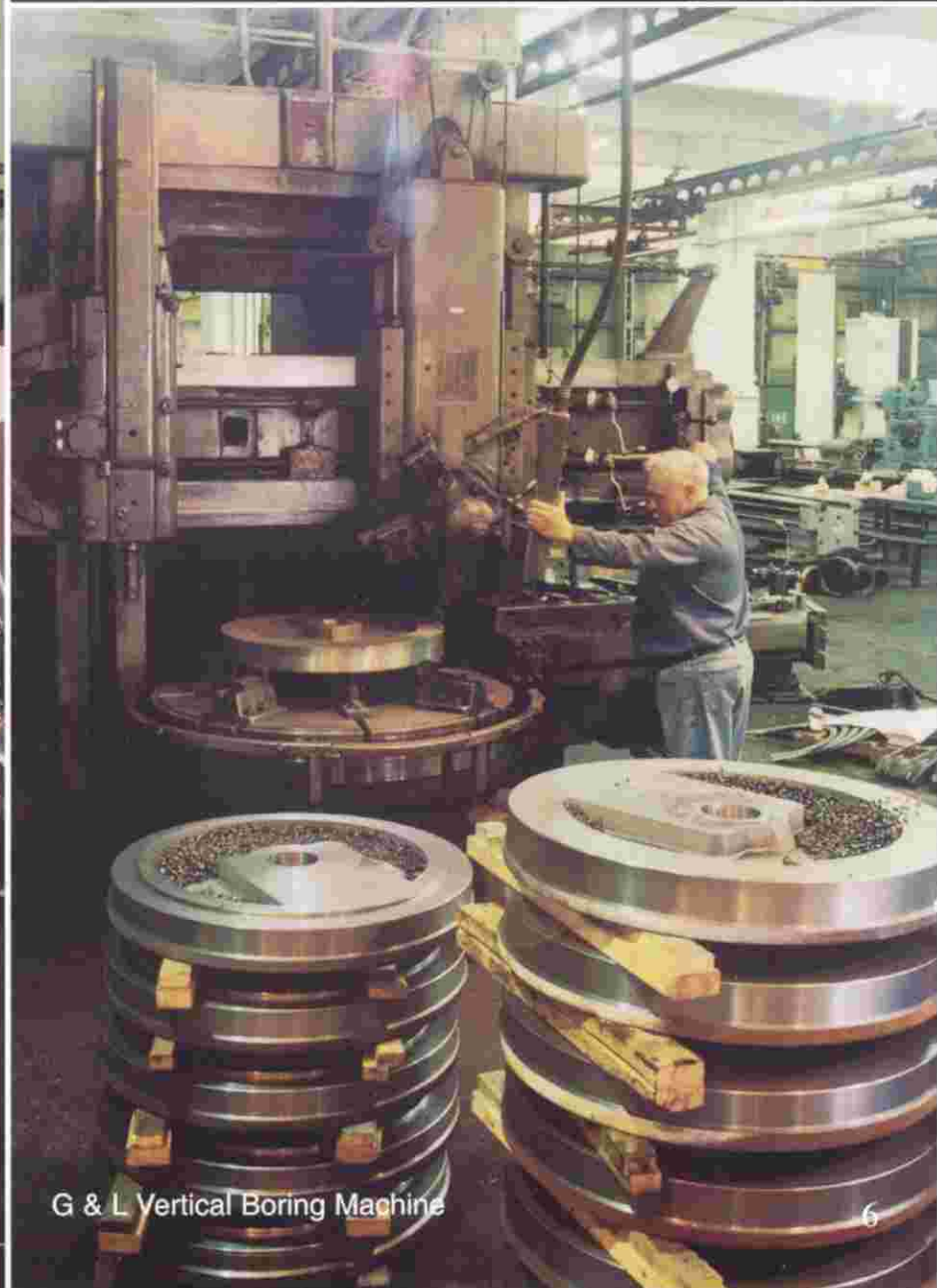




Three of Seven Various Size
Conventional Lathes



Radial Arm Drill Press



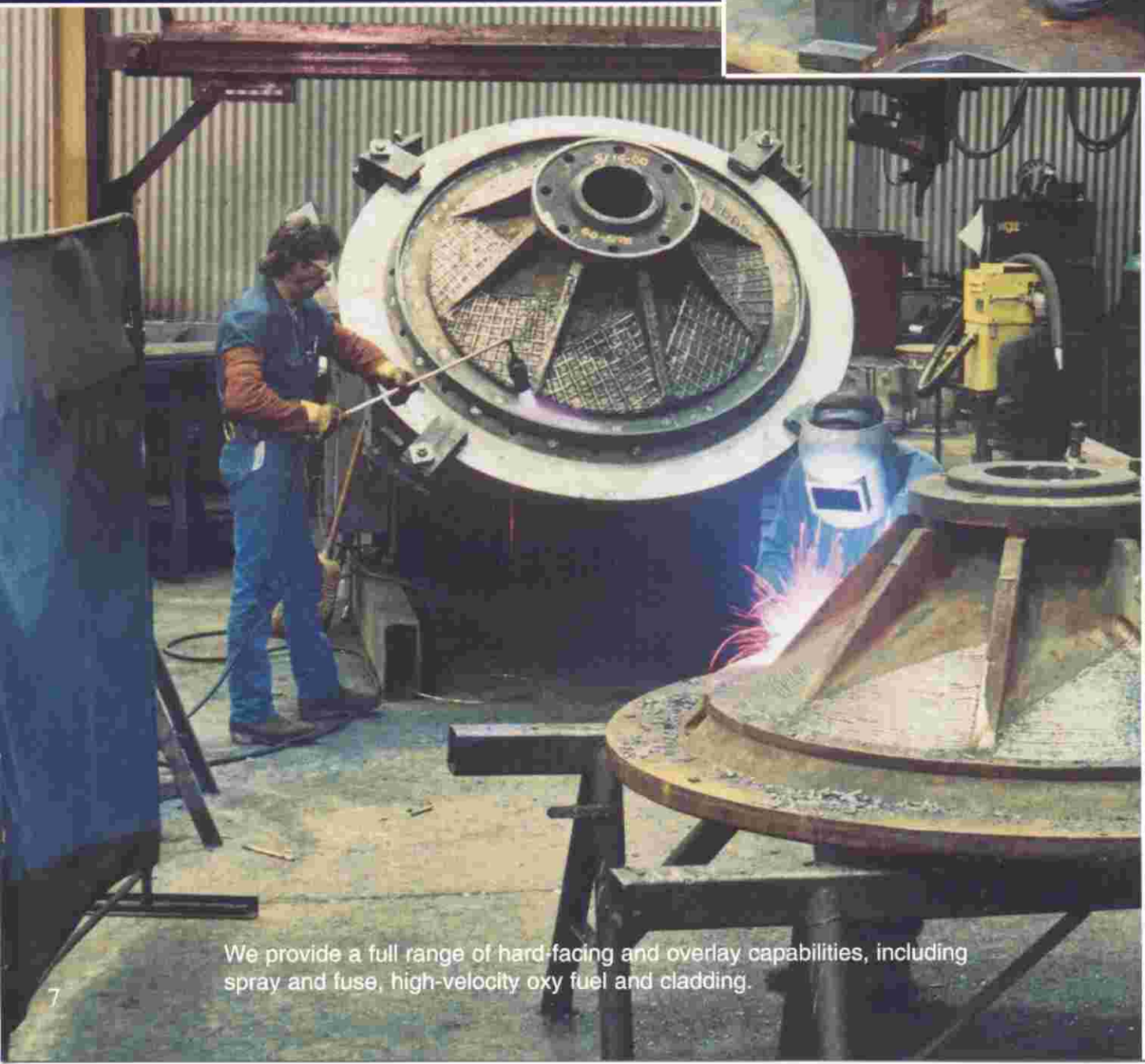
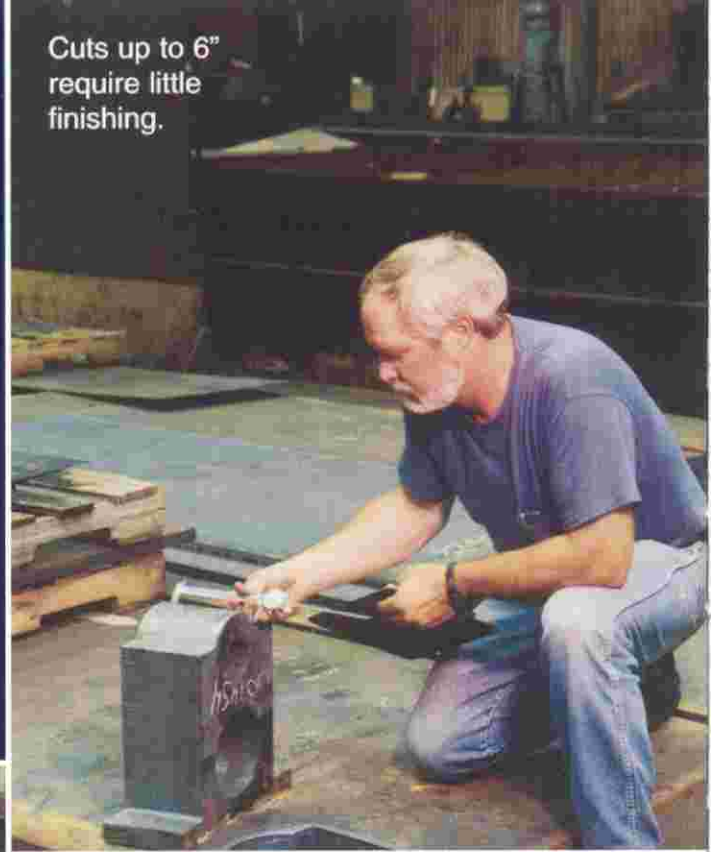
G & L Vertical Boring Machine

KNOWN FOR OUR WELDING...

ASME SECTION VIII CERTIFIED

Our expertise in welding has made us a world leader in this area. We have welded every alloy in existence, including, but not limited to, titanium, Hastelloy, copper, Inconell, stainless steel and aluminum bronze. All of our welding is performed in accordance with AWS D1.1 and ASME Section VIII. We hold the "U", "S", "R" and "PP" Pressure vessel stamps. Nothing is too exotic for our welding department

Cuts up to 6"
require little
finishing.



We provide a full range of hard-facing and overlay capabilities, including spray and fuse, high-velocity oxy fuel and cladding.



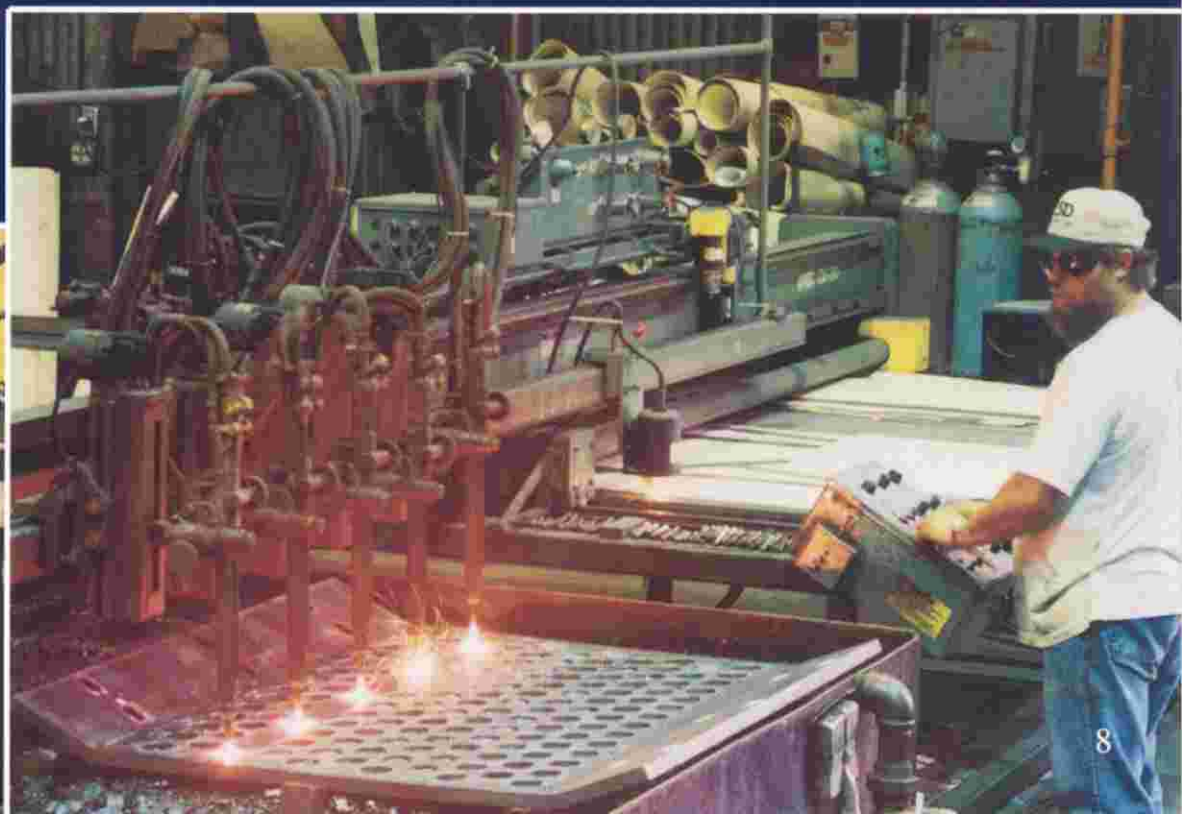
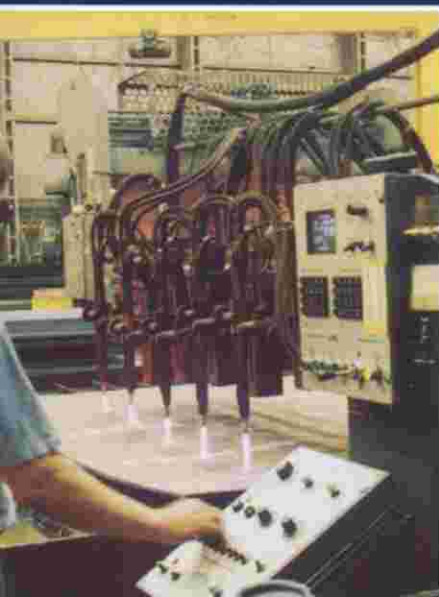
Above: Exotic alloy fabrication with X-ray quality welding

Quality control is an important part of our service. Our manager in this critical area is Level III certified. Our quality control manual is in accordance with ISO 9000 standards, and every employee understands we must produce documented quality



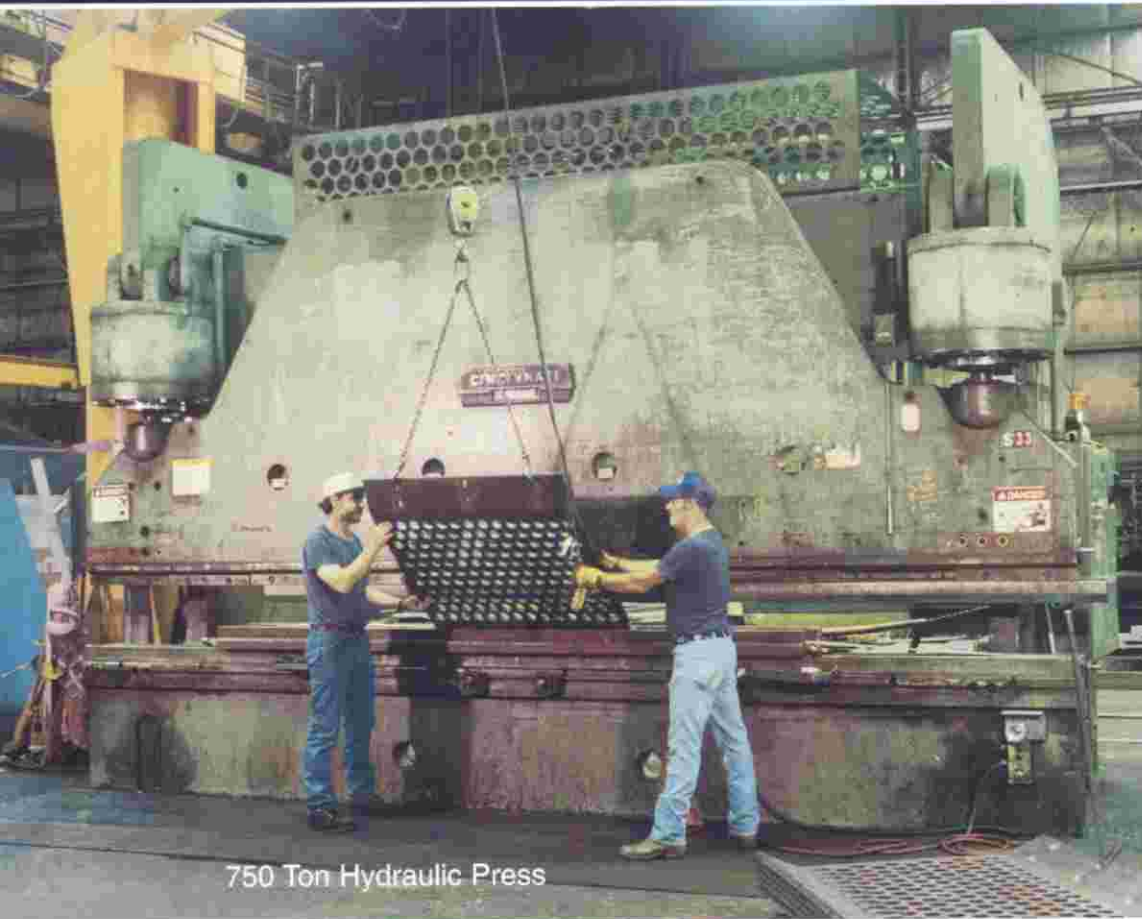
Below: 100" 5 head pantagraph plasma burning machine with water immersion table.

Below: 120" x 30' NC Control 6 head gas and plasma burning machine with water immersion table

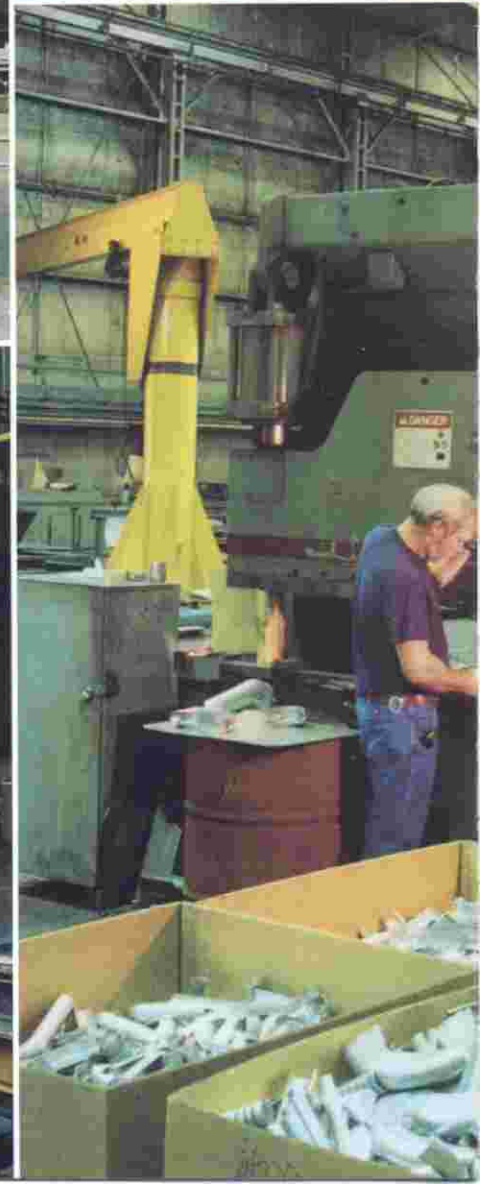


FABRICATION

Fabrication is our mainstay. We can burn it, punch it, shear it, roll it, press it, drill it, balance it, vibratory stress relieve it, thermal stress relieve it, weld it, paint it and truck it.



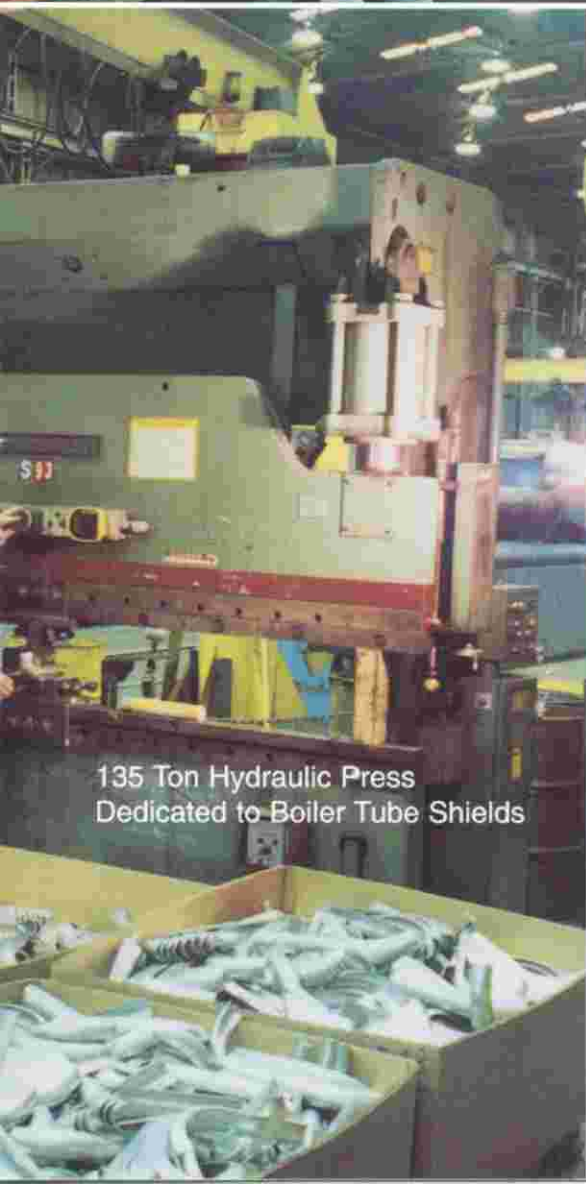
750 Ton Hydraulic Press



Hydraulic Shear 3/4" x 12"-0" MS



Rolls Bar/Angle/Channel
up to 5" x 5" x 5/8"

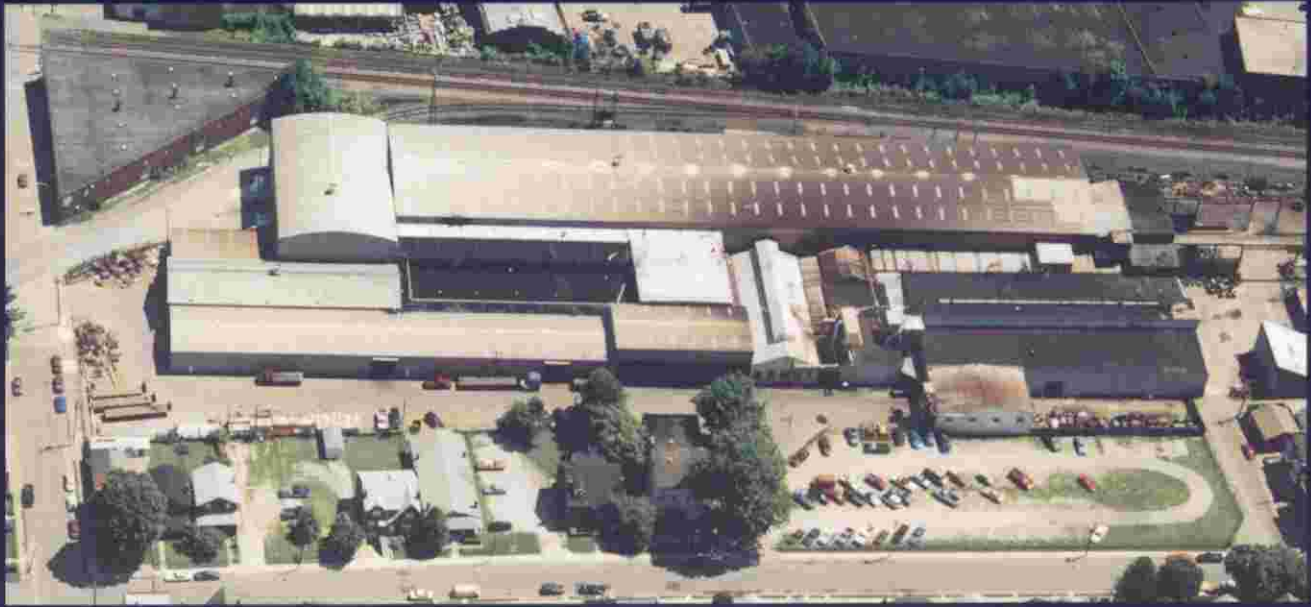


135 Ton Hydraulic Press
Dedicated to Boiler Tube Shields



Plate Rolling Machine
up to 10' - 0" x 1"

Ready to Serve You . . . Since 1902!



Our Charleston Plant offers rail transportation.



Our Buffalo Plant offers river barge loading and rail transportation.

KANAWHA MANUFACTURING COMPANY

1520 Dixie Street - P.O. Box 1786
Charleston, West Virginia 25326

Office 304-342-6127
E-Mail: kmc@kanawhamfg.com

Fax 304-343-4113
Web: www.kanawhamfg.com